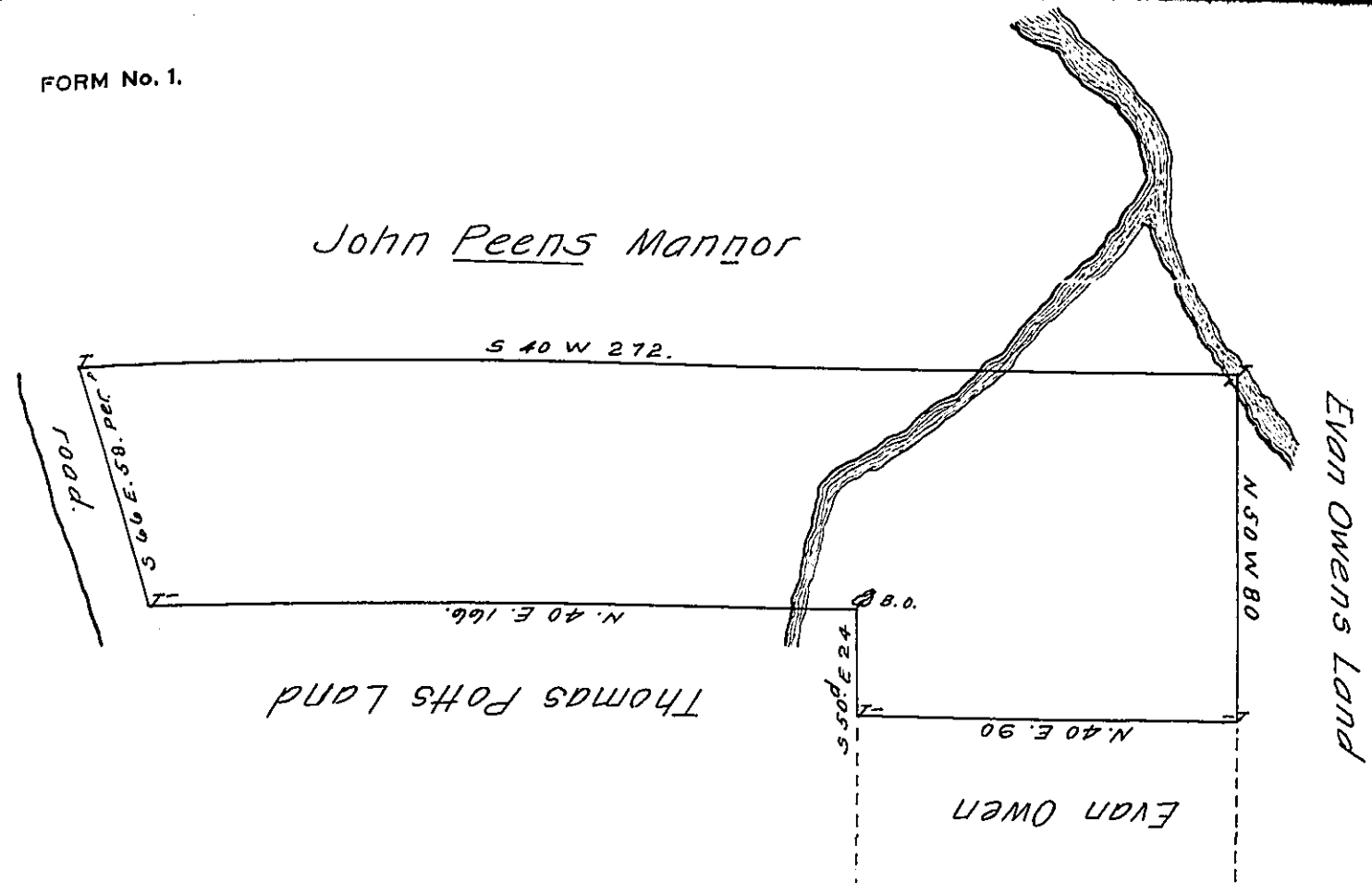


90	182
80	166
7200	348
	174
	56
	1044
	870
	9744
	7200
	16944



By Virtue of a Warrant dated the 23^d day of the 12th Month 1701, There was ^{to survey to John} Chandler in right of his former Service to the Prop^r the quant^y of 100^{ac} of Land. Surveyd to John Price in right of John Chandler a Tract of land situate Near Manatawny in the County of Philad^a. begining at a Post in the line of John Peens Mannor Then (obliterated) West Two hundred Seven (obl.) to a Post in the said line. thence by late Evan Owen Deceased North fifty degrees West Eighty perches to a Post, thence by the said Evans land North forty degrees East Ninety perches to a Post in a line of Thomas Potts land. Thence by the Same South fifty degrees East Twenty four perches to a Black oak Sapling, thence by the said Potts land North forty degrees East One hundred Sixty Six perches to a Post ~~by a Post~~ in the said Pott's line. then by a Great road leading from Colebrookdale to Philad^a fifty eight ^{Perches} to the Place of begining. Containing One hundred acres wth with Allowance of Six p Cent. Surveyd April 10th 1731.

by Nicholas Scull. —

IN TESTIMONY that the above is a copy of the original remaining on file in the Department of Internal Affairs of Pennsylvania, made conformably to an Act of Assembly approved the 16th day of February, 1833, I have hereunto set my Hand and caused the Seal of said Department to be affixed at Harrisburg, this twenty first day of March 1910.

Henry Howell
Secretary of Internal Affairs.